



ARCTIC KINGDOM
POLAR EXPEDITIONS INC.



**BOWHEAD WHALES, WALRUS
& POLAR BEARS OF FOXE BASIN**

A journey of awe inspiring and unforgettable panoramas. Ice islands draped with walrus, bowhead whales, polar bears and all night sunsets.

itinerary

(group size 8-12 people)

The following itinerary is used as a guideline for what to expect, but due to animal movements, ice conditions and weather, the daily itinerary may change.

Day 0

Arrive in Ottawa and check into Ottawa hotel.

Day 1

Depart Ottawa for Iqaluit, the capital of Nunavut and Canada's newest territory. Change planes and arrive in Igloolik/Hall Beach - the starting communities from which our journey begins. Transfer to our waiting snowmobiles and boats and travel out to the luxury outpost safari-style base camp where our chef has prepared a welcome dinner.

Day 2

We take our first visit to the floe edge – where land based solid sea ice meets the open water and familiarize ourselves with this new



BOWHEAD WHALES, WALRUS & POLAR BEARS OF FOXE BASIN

life defining moments...



- Listen to the breathing and bellows of walrus basking in the sunlight on floating ice islands by the hundreds
- Observe polar bears as they hunt walrus, seals or swim amongst the pack ice
- Experience the real Arctic, up close and personal fully escorted and in partnership with the local Inuit people
- Live the adventure of being immersed in the arctic, and not just as a passenger on a trip

activities

- kayaking
- boat cruising
- hiking
- Optional: Snorkel or Scuba Diving by request

testimonial

We all had a great time! Were so awed we wanted to stay...We have lots of great pictures and have made friends and family very envious and stimulated some to think about going.

R. R. - California USA



environment. Wonder at the numerous sea birds diving, and swooping over the water.

Day 3

We travel by boat far out into the Foxe Basin where we come upon a pair of walrus huddled on the ice pack. We quietly watch these enormous animals and take photographs from both the ice and boat getting as close as our expedition leaders and Inuit guides will allow. We enjoy a hot lunch on the very same piece of ice as the walrus, which are not at all concerned by our presence. On the journey back we spot a few Bowhead whales cruising the icy waters.

Day 4

We journey out again by boat. The bright sun reflecting off the crystal-clear flat waters is simply magical. We come upon four large floating islands of ice covered with Walrus. At least a hundred animals sit on each island and steam rises from the group as they sun

themselves. We observe the walrus diving for clams and repeatedly hauling themselves out of the water and back up onto their resting platform on the ice.

Day 5

The wind has picked up and we decide to explore the land and ice closer to the base camp. We take some time to visit nearby Thule ruins and learn about traditional Inuit life.

Day 6

The sea is completely mirror calm. We spot a Polar Bear swimming amongst the ice on the hunt for Walrus . We return to the floe edge where the Bowheads patrol and enjoy relaxing amongst the regular whale sounds.

Day 7

Early morning departure to return to Ottawa



experience designer

To come to the Foxe Basin in the summer is to see one of the most prolific wildlife areas of the Arctic. As Expedition Director for over a decade I can say this is an amazing location to see walrus, bowhead whales and even polar bears up close.

Ask to speak to me to get a first hand account of this trip or others.

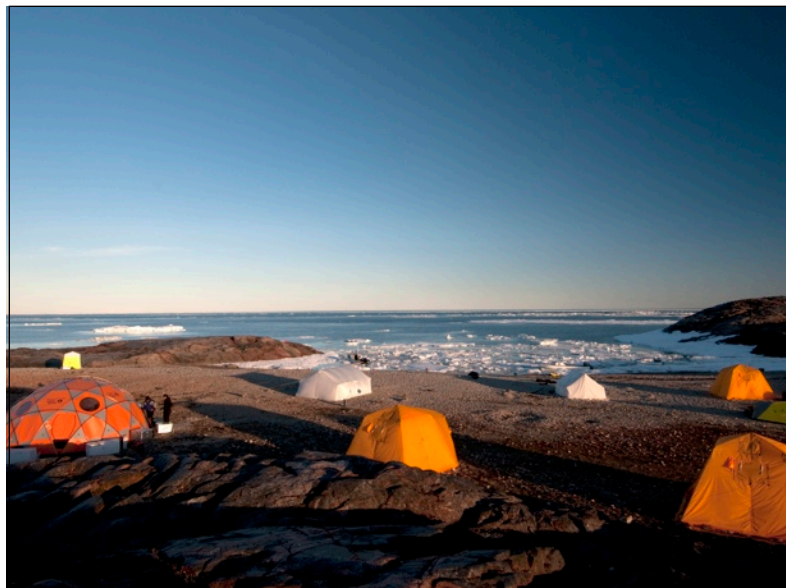
Thomas Lennartz

where we sleep

Upscale seasonal Arctic safari-style tented camp

Inspired by safari camps, we bring you the ultimate in comfort to the high Arctic.

Set directly on the sea ice (conditions permitting), we enjoy hearty food prepared by a private chef. The dining lounge is a place to relax with your fellow travellers. Afterwards, retire to your spacious tent through a large door-way onto a wooden floor equipped with electric power, heaters, elevated beds and ample standing room. We have perfected the art of a remote camp with all the amenities of home.



WHAT'S INCLUDED

- The services of a highly qualified Inuit Guides and Arctic Kingdom Expedition Leader
- All transportation duration of trip
- All accommodations – 1 nights Igloodik/Hall Beach, 6 nights arctic safari-style luxury base camp
- All meals from Igloodik/Hall Beach

WHAT'S NOT INCLUDED

- Ottawa Hotels and meals
- Airfare to/from Igloodik/Hall Beach
- Tips/Gratuities, Personal Expenses, Travel, Luggage, Medical and Search and Rescue Insurance
- Additional costs associated with weather/flight delays and/or layovers in Igloodik/Hall Beach, Iqaluit or Ottawa including flight changes, additional hotels and meals.

details

trip length	7 d/ 6 n
2011 dates	Jun 28 - Jul 4 Jul 5 - 11 Jul 12 - 18 Jul 19 - 25
price	\$9,200
sgl supplement	\$2,900
air package	\$2,200
daylight hours	24 hours
average temp	+ 4 C

terms & conditions

Payment & Deposit:

- \$2000 deposit required at time of booking
- Full payment due 90 days prior to departure date

Cancellation Terms:

- Outside 90 days - full refund of deposit less \$500 admin charge
- 90 to 60 days prior to trip - 50% refund
- 0 to 60 days prior to trip - no refund

All prices quoted in Canadian Dollars

contact us

Arctic Kingdom Marine Expeditions Inc.
3335 Yonge St., Suite 402 Toronto ON M4N 2M1 Canada

Direct: +1 (416) 322-7066 United Kingdom: +44 203 393 7727
Toll Free: (888) 737-6818 Germany: +49 308 967 79101
Fax: +1 (416) 887-0529

Email: adventures@arctickingdom.com